

Safety Helmets



uvex

uvex i-gonomics

Measurable stress reduction for safety helmets

uvex i-gonomics is redefining wearer comfort. The innovative product system distinguishes itself through ergonomic fit, light weight and ideal temperature control properties resulting in evenly distributed weight, freedom of movement and a comfortable interior climate enabling wearers to get on with the job at hand, even in extreme conditions.

uvex pheos visor



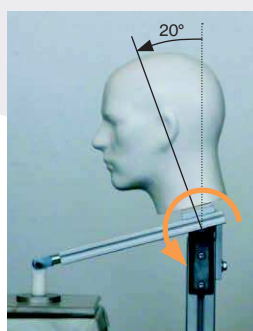
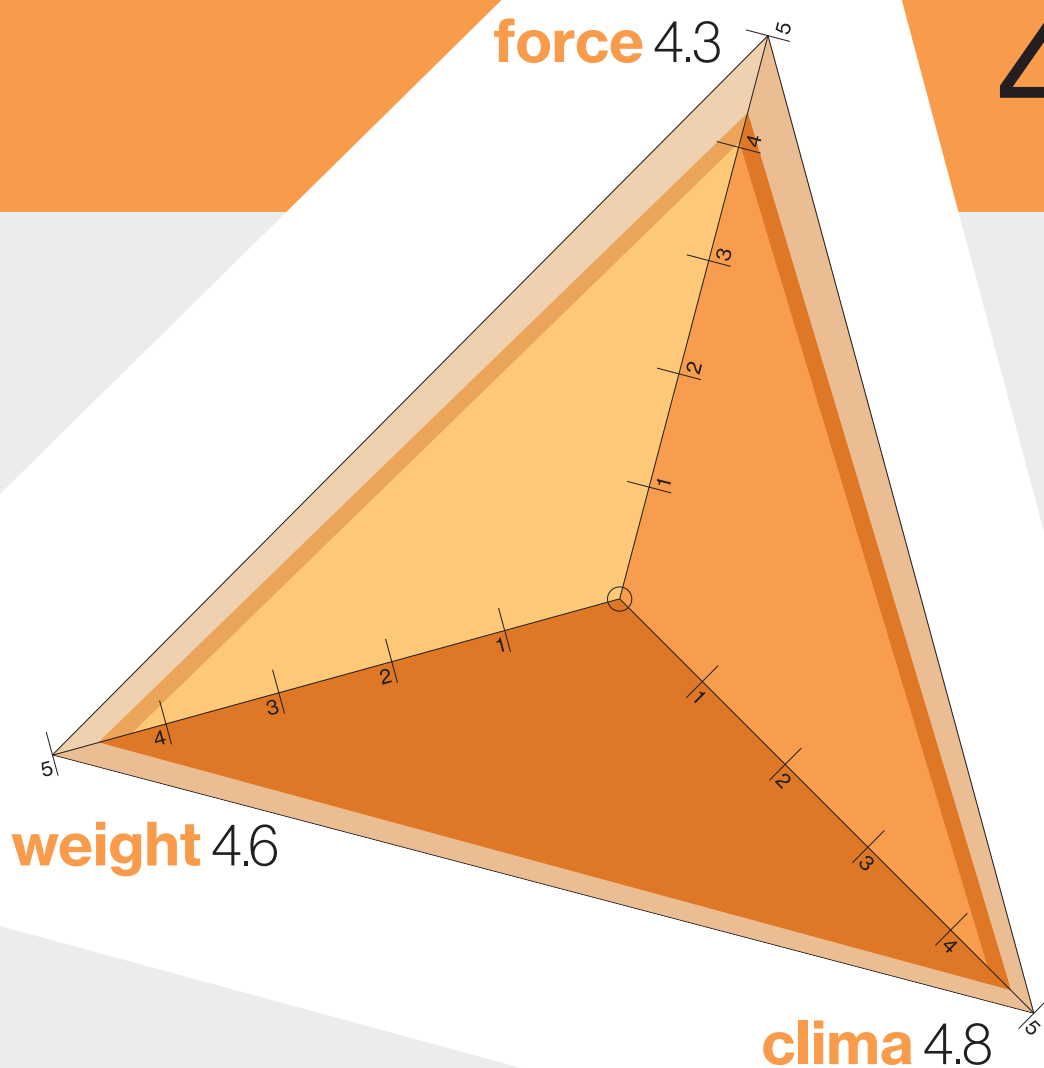
The uvex pheos safety helmet and visor seamlessly combined. The visor's magnetic locking system evenly distributes weight across the body's centre of gravity: significantly reducing the onset of fatigue and ensuring high levels of wearer comfort. Its exceptional RI value of 4.57 means the innovative helmet system is ideally suited for all applications in construction and industry.

* independently tested by the Chemnitz Technical University

Relief-Index

4.57

The relief index is calculated using the mean value of the three index values (IV) for force, weight and temperature – ranging from 0 (= poor) to 5 (=perfect).



force

- Test method: twist moment measurement in the neck area*
- Test result: twist moment = 0.47 Nm (IV 4.3)
- Minimises stress on the head and neck, reduces onset of fatigue



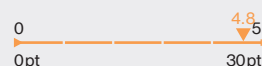
weight

- Test method: visor weight (without helmet)
- Test result: product weight = 230 g (IV 4.6)
- High levels of wearer comfort and sustained performance



clima

- Test method: uvex benchmark test "Anti-fog"
- Anti-fog performance = 29 Points (IV 4.8)
- Fog-free vision even under extreme conditions



uvex pheos

IES ensures eyewear is always where it should be

Normally, when combining helmets and safety eyewear products, the position of eyewear always directly depends on that of the helmet shell. If the helmet unexpectedly shifts as a result of sudden movement, this inevitably means the visor moves, which can be dangerous as it changes light conditions.

IES stands for Integrated Eyewear System and the name says it all: With this system, uvex pheos safety spectacles can be pushed up inside the uvex pheos helmet or pulled down to sit on the nose. The sliding element is jointed so that movement of the helmet does not impact the eyewear.

Simple to use

The clip system with the integrated spectacle means eyewear can be easily attached and removed for cleaning or replacement.



Integrated Eyewear System

The nose piece of uvex pheos safety spectacles is clicked into the mount and locked into the sliding element in the interior of the helmet.

Increased flexibility

The duo-spherical lenses of the uvex pheos safety spectacles not only ensure a wide field of vision and an optimum fit, but are also available with range of different lenses regardless of shade options and coatings.

Increased safety

This unique construction means that forces impacting on the helmet are not transferred to eyewear, ensuring the best possible protection for the wearer.



Functionality uvex pheos IES

The spectacles have a set storage spot in the helmet. If safety eyewear is required, it can be pulled down quickly and easily.

Safety Helmets

uvex pheos IES · uvex pheos B · uvex pheos B-WR



9772.040



9772.240



9772.140



uvex pheos IES

- Three variable air vents aids airflow and helps regulate the temperature within the helmet making it more comfortable to wear
- Adapter systems for attaching uvex visors, uvex earmuffs and lamps
- The interior harness makes it possible to attach the uvex pheos spectacle using the spectacle mounting clip
- The helmet can be individually adjusted using the rotating ratchet wheel to alter the width size
- Certified in accordance with EN 397 with the additional requirement:
-30 °C = provides protection even in extremely low temperatures
MM = molten metal (splash)
- Adjustable size range: 55 – 61 cm

Art. no.	Colour	Retail unit
9772.040	white	25
9772.140	yellow	25
9772.240	orange	25



product
design award

2013



9772.020



9772.320



9772.120



9772.520



9772.220



9772.920

uvex pheos B

- Three variable air vents aids airflow and helps regulate the temperature within the helmet making it more comfortable to wear
- Adapter systems for attaching uvex visors, uvex earmuffs and lamps
- Conventional suspension harness for a comfortable fit
- Certified in accordance with EN 397 with the additional requirement:
-30 °C = provides protection even in extremely low temperatures
MM = molten metal (splash)
- Adjustable size range: 51 – 61 cm

Art. no.	Colour	Retail unit
9772.020	white	25
9772.120	yellow	25
9772.220	orange	25
9772.320	red	25
9772.520	blue	25
9772.920	black	25



9772.030



9772.430



9772.130



9772.530



9772.230



9772.930

uvex pheos B-WR

- Three variable air vents aids airflow and helps regulate the temperature within the helmet making it more comfortable to wear
- Adapter systems for attaching uvex visors, uvex earmuffs and lamps
- Suspension harness with rotating ratchet wheel allows the width size to be adjusted for an individual fit
- Certified in accordance with EN 397 with the additional requirement:
-30 °C = provides protection even in extremely low temperatures
MM = molten metal (splash)
- Adjustable size range: 52 – 61 cm

Art. no.	Colour	Retail unit
9772.030	white	25
9772.130	yellow	25
9772.230	orange	25
9772.430	green	25
9772.530	blue	25
9772.930	black	25

Safety Helmets

uvex pheos B-S-WR · uvex pheos E · uvex pheos E-WR · uvex pheos E-S-WR



9772.031



9772.131



9772.332



9772.531



9772.832



9772.932

uvex pheos B-S-WR

- Three variable air vents
- Adapter systems for uvex visors, uvex earmuffs and lamps with helmet attachment
- Shorter brim for a wider field of upward vision
- Suspension harness with rotating size adjusters for individual width adjustment
- Certified in accordance with EN 397 with the additional requirement:
 - 30 °C = provides protection even in extremely low temperatures
 - MM = molten metal (splash)
- Adjustable size range: 52 – 61 cm

Art. no.	Colour	Retail unit
9772.031	white	25
9772.131	yellow	25
9772.332	red	25
9772.531	blue	25
9772.832	dark grey	25
9772.932	black	25



9770.020



9770.030



9770.120



9770.130

uvex pheos E · uvex pheos E-WR

- Suitable for use by electricians as helmet shell is fully closed
- Adapter systems for uvex visors, uvex earmuffs and lamps with helmet attachment
- Certified in accordance with EN 397 with the additional requirement:
 - 30 °C = provides protection even in extremely low temperatures
 - MM = molten metal (splash)
- Certified in accordance with EN 50365 (1000 V AC)

uvex pheos E

- Conventional suspension harness for a comfortable fit
- Adjustable size range: 51 – 61 cm

Art. no.	Colour	Retail unit
9770.020	white	25
9770.120	yellow	25

uvex pheos E-WR

- Suspension harness with rotating size adjusters for individual width adjustment
- Adjustable size range: 52 – 61 cm

Art. no.	Colour	Retail unit
9770.030	white	25
9770.130	yellow	25
9770.230	Orange	25
9770.430	Green	25
9770.530	Blue	25
9770.330	Red	25



9770.031



9770.131



9770.832

uvex pheos E-S-WR

- Suitable for use by electricians as helmet shell is fully closed
- Adapter systems for uvex visors, uvex earmuffs and lamps with helmet attachment
- Shorter brim for a wider field of upward vision
- Certified in accordance with EN 397 with the additional requirement:
 - 30 °C = provides protection even in extremely low temperatures
 - MM = molten metal (splash)
- Certified in accordance with EN 50365 (1000 V AC)
- Suspension harness with rotating size adjusters for individual width adjustment
- Adjustable size range: 52 – 61 cm

Art. no.	Colour	Retail unit
9770.031	white	25
9770.131	yellow	25
9770.832	dark grey	25

Safety Helmets

uvex 9780 antistatic · uvex pheos alpine · Reflective stripes



uvex 9780 antistatic-WR

uvex 9780 antistatic

- Three variable air vents
- Adapter systems for uvex visors, uvex earmuffs and lamps with helmet attachment
- Certified in accordance with EN 397 and suitable for unrestricted application in accordance with Equipment Groups I and II for use in potentially explosive atmospheres (in accordance with ATEX Directive 94/9/EG)

uvex 9780 antistatic-WR

- Suspension harness with rotating size adjusters for individual width adjustment
- Adjustable size range: 52 – 61 cm

uvex 9780 antistatic

- Conventional suspension harness for a comfortable fit
- Adjustable size range: 51 – 61 cm

Art. no.	Colour	Retail unit
9780.030	white	25
9780.550	sky blue	25

Art. no.	Colour	Retail unit
9780.020	white	25



uvex pheos alpine

Multifunctional helmets for working at heights and rescue operations

- Combination of features from the industrial protection helmet in accordance with EN 397 and with the EN 12492 requirements for climbing helmets
- Light ABS helmet shell offers high level of protection and durability
- Side Euroslot adapters (30 mm) for attaching ear muffs
- Attachment for face protection available

- The 6-point textile suspension harness ensures an optimum fit and comfort
- Clips for attaching extras with elastic band, e.g. wide vision goggles and LED climbing helmet torch
- Head torches (miner's lamp) can be attached
- Tested and certified in accordance with EN 397 and EN 12492
- Certified in accordance with EN 397 with the additional requirement: -30 °C = provides protection even in extremely low temperatures
- Adjustable size range: 52 – 61 cm



product
design award

2013

Art. no.	Colour	Retail unit
9773.050	white	1
9773.150	yellow	1
9773.250	orange	1
9773.350	red	1
9773.450	green	1
9773.550	blue	1
9773.950	black	1

uvex pheos reflex set L
(select preferred helmet colour)



9790.018

uvex pheos reflective stripes

uvex pheos reflex set M

- Highly reflective sticker set
- The prism foil ensures superior luminosity in low light environments and is similar to that used by the emergency services
- Easy to attach
- Suitable for all uvex pheos and uvex pheos alpine helmets

uvex pheos reflex set L

The uvex pheos reflex set L is a reflective sticker set that has been specially developed for uvex pheos industrial safety helmets. The stickers can be combined with all uvex pheos types and colours. Helmets are supplied with the stickers already attached.

Art. no.	9790.018
Version	Easily attachable, highly reflective set of reflectors
Retail unit	1

Please note that customised helmets are exempt from return.

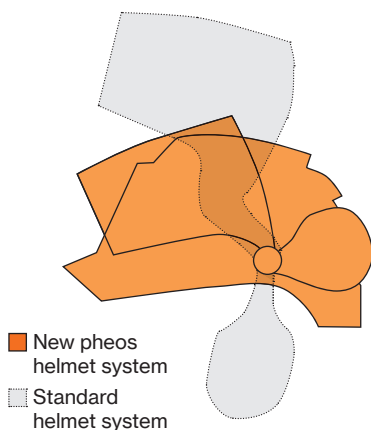
Retail unit	25 units, unassorted helmets
-------------	------------------------------

► Please contact our service hotline on +65 6562 8138.

uvex pheos visor system

Perfect ergonomics. Maximum functionality.

Every detail of the new pheos helmet system has been carefully thought through to deliver an advanced head protection solution. The magnetic locking system makes it even easier to attach the visor, while the ergonomic joint system makes it extremely comfortable to wear even for longer periods.



Perfect „resting position“ for the visor and hearing protection

The visor can be locked above the helmet shell when not required, while the hearing protection can be folded back. Everything fits closely to the helmet and is perfectly balanced – ensuring maximum comfort and freedom of movement. There is no unnecessary weight to strain the muscles of the neck.



Magnetic lock system
for visor and earmuffs



Comfortable to wear in every position

The joint system designed to improve the helmets ergonomics, evenly distributes the weight of all attachments across the body's centre of gravity – ensuring it can be worn without causing fatigue.

One click visor attachment system

The unique magnetic lock system means parts click into each other easily – the helmet does not need to be removed when attaching or changing the visor.

Adapts perfectly to your requirements due to the flexible modular system.

Whether to protect against splinters or sparks, when working with noisy machinery or at height: the uvex pheos modular system can be quickly and easily adapted to your workplace environment – interchangeable components fit perfectly into the ergonomic structure.

MADE IN GERMANY 



Extra-soft earmuffs

Extra soft memory foam ear cushions ensure ultimate wearer comfort – the uvex pheos K2H can be fitted quickly and easily using the magnetic locking system when required.

You can find the suitable uvex pheos K2H earmuffs and uvex pheos K2H magnet on page 80.



Optimal vision

The anti-fog, scratch resistant, high quality polycarbonate visor complies with the specifications of the top optical grade – and is available as a clear or tinted shade option.

You can find suitable visors for the uvex pheos helmet system on page 88.

Reliable face protection

The visor fits the helmet seamlessly, leaving no gaps: the injection moulded, transparent peak provides optimum protection in preventing particles penetrating the inside of the visor.



Safety Helmets

uvex pheos visor system



9906.002
9906.005



9906.003
9906.006



9906.007



9906.008



9790.067

uvex pheos Visor · 9906

- Polycarbonate visor with uvex supravision excellence coating technology
- Certified for areas of application 3 (liquids) and 9 (hot solids and molten metal)
- Available with two alternative mountings: magnetic side piece or automatic magnetic lock
- 9906.005 and 9906.006 certified in accordance with GS-ET 29 as Class 1 visor for protection from electrical arcs (4 kA)
- 9906.007 and 9906.008 certified in accordance with GS-ET 29 as Class 2 visor for protection from electrical arcs (7 kA), includes chin protector
- Compatible with the uvex pheos E-S-WR and uvex pheos B-S-WR safety helmets, as well as with the uvex pheos alpine safety helmet for working at heights (the visor adapter 9790.067 is required for combination with the uvex pheos alpine safety helmet)
- Can be combined with uvex K2H and uvex K2H magnet earmuffs

► Helmet not included.

uvex pheos · uvex pheos magnetic	
Art. no.	9906.002 (mechanical side piece) 9906.003 (automatic magnetic lock)
Lens	PC clear/UV 400 2C-1.2 W 1 B 9 KN CE 0196 uvex supravision excellence

uvex pheos SLB 1 · uvex pheos SLB 1 magnetic	
Art. no.	9906.005 (mechanical side piece) 9906.006 (automatic magnetic lock)
Lens	PC clear/UV 400 2C-1.2 W 1 Bx 8-1-0 9 KN CE 0196 uvex supravision excellence
Version	Certified as Class 1 visor for protection from electrical arcs

uvex pheos SLB 2 · uvex pheos SLB 2 magnetic	
Art. no.	9906.007 (mechanical side piece) 9906.008 (automatic magnetic lock)
Lens	PC blue/UV 400 2C-1.2 W 1 B 8-2-0 9 KN CE 0196 uvex supravision excellence
Version	Certified as Class 2 visor for protection from electrical arcs, includes chin protector

uvex pheos visor system

Visor adapter

Art. no.	9790.067 for combination with the uvex pheos alpine safety helmet for working at heights
-----------------	---------------------------------------------------------------------------------------------

Visor not included!

Replacement lenses

uvex pheos SLB 1	
Art. no.	9906.012
Lens	PC clear/UV 400 2C-1.2 W 1 8-1-0 9 KN CE 0196 uvex supravision excellence
Version	Certified as Class 1 visor for protection from electrical arcs

uvex pheos SLB 2	
Art. no.	9906.017
Lens	PC blue/UV 400 2C-1.2 W 1 8-2-0 9 KN CE 0196 uvex supravision excellence
Version	Certified as Class 2 visor for protection from electrical arcs, includes chin protector

Safety Helmets

uvex Visors · Face protection



9790.047



9924.010



9790.048



uvex 9790

- Visor made from strong polycarbonate
- Compatible with uvex safety helmets and uvex 2H, uvex 3H and uvex 3200H earmuffs with helmet attachment
- An additional adapter (Art. no. 9924.010) is required for helmet and visor combination (without helmet earmuffs)

► Helmet and hearing protection not included!

Helmet bracket	
Art. no.	9790.047

Adapter for attaching without helmet ear muffs	
Art. no.	9924.010

Lens	
Art. no.	9790.048
Material	PC clear
	Class 8, against the effects of electrical arcs



9705.014



9706.514

uvex 9705 · uvex 9706

- Lightweight visor made of robust plastic with integrated forehead cover
- Twist ratchet enables simple and reliable adjustment to any head size
- Flip-up mechanism allows the visor to be set in any position
- Easy visor replacement

Faceshield	
Art. no.	9705.014
Lens	CA, clear
Replacement lens	
Art. no.	9060.017
Lens	CA, clear

Faceshield	
Art. no.	9706.514
Lens	CA, clear, non-fogging
Replacement lens	
Art. no.	9050.517
Lens	CA, clear, non-fogging



9707.014



9708.514

uvex 9707 · uvex 9708

- Robust visor with integrated forehead cover
- Additional protective cap made from impact-resistant polystyrene
- Twist ratchet enables simple and reliable adjustment to any head size
- Flip-up mechanism allows the visor to be set in any position
- Easy visor replacement

Faceshield	
Art. no.	9707.014
Lens	CA, clear
Replacement lens	
Art. no.	9060.017
Lens	CA, clear

Faceshield	
Art. no.	9708.514
Lens	CA, clear, non-fogging
Replacement lens	
Art. no.	9050.517
Lens	CA, clear, non-fogging

Safety Helmets

Accessories

Accessories for the uvex pheos, uvex 9780 antistatic, uvex pheos alpine



9772.001

IES interior fittings for the uvex pheos	
Art. no.	9772.001
Version	Plastic interior fitting with uvex pheos spectacle clip
Retail unit	10



9760.007

Sweatband for IES interior fittings	
Art. no.	9760.007
Version	textile
Retail unit	10



9760.000

uvex pheos interior	
Art. no.	9760.000
Version	6-point-textile suspension harness with sweatband, approx. 75 g
Retail unit	10



9790.005

Leather chinstrap	
Art. no.	9790.005
Version	Robust leather design with plastic eyelets, adjustable length
Retail unit	10



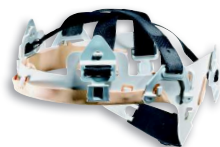
9760.001

Interior fittings for the uvex pheos with rotating size adjuster (not for uvex pheos E)	
Art. no.	9760.001
Version	approx. 75 g
Retail unit	10



9790.021

Forked chinstrap for uvex pheos	
Art. no.	9790.021
Version	plastic
Retail unit	10



9780.001

Suspension harness with rotating size adjuster for uvex 9780 antistatic	
Art. no.	9780.001
Version	6-point-textile suspension harness with sweatband, approx. 80 g
Retail unit	10



9790.023

Pen holder for uvex pheos	
Art. no.	9790.023
Version	plastic
Retail unit	10



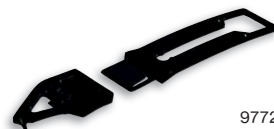
9760.005

Sweatband for uvex pheos, uvex pheos alpine, uvex 9780 antistatic	
Art. no.	9760.005
Version	Imitation leather
Retail unit	10



9790.022

Goggle clip for uvex pheos/Chin strap clip for uvex pheos alpine	
Art. no.	9790.022
Version	plastic
Retail unit	10



9772.002

IES eyewear clip with slider for uvex pheos IES	
Art. no.	9772.002
Version	plastic
Retail unit	10

Safety Helmets

Accessories: Head torches

- All uvex LED head torches attach to the front of the uvex pheos, uvex pheos alpine and uvex 9780 antistatic helmets.



9790.058

LED head torch KS-7610-MX

- LED head torch with three beam types +CREE LED
- ATEX certified II 2G Ex ib IIC T4
- Protection level IP67 (waterproof up to a depth of 1 metre)
- Light source: lithium battery, charge time <9 h
- For use in temperatures ranging from -20 °C up to +60 °C
- Beam energy up to a maximum of 195 lm
- Beam strength: emergency beam >1,200 lx, normal beam >3,700 lx, bright beam >5,000 lx
- Beam duration: emergency beam >50 h, normal beam >14 h, bright beam >6 h
- Charger with charging cradle included in delivery

Art. no.	9790.058
Retail unit	1



9790.029

LED head torch KS-6001

- LED head torch with 2 beam types
- Protection level: IP67 (waterproof to a depth of up to 1 metre)
- Light source: lithium battery, charge time < 7 h
- Ambient temperature: -20 °C to +60 °C
- Beam energy up to a maximum of 55 lm
- Beam strength: emergency beam > 200 lx, normal beam > 1,400 lx
- Light duration: emergency beam > 80 h, normal beam > 11 h
- Charger included in delivery

Art. no.	9790.029
Retail unit	1



9790.064

LED head torch u-cap sport

- Simple attachment to the uvex u-cap sport bump cap via magnetic adapter
- LED head torch with two separate reflective elements for long-distance and flood lighting
- Protection level IP66 (dust tight and protected against heavy seas or powerful jets of water)
- For use in temperatures ranging from -20 °C up to +45 °C
- Light source: 3 AAA batteries (rechargeable batteries can also be used)
- Beam energy up to a maximum of 100 lm
- Beam range: 3m to 80m (depends on light mode in operation)
- Beam duration: 30 h – to 150 h (depends on light mode in operation)
- Bump cap adapter and headband included
- Batteries not included

Art. no.	9790.064
Retail unit	1

uvex pheos helmet adapter

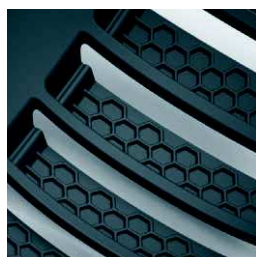
- Adapter for LED uvex u-cap sport headlamp for combining with the uvex pheos and uvex pheos alpine helmets

Art. no.	9790.069
Retail unit	1

uvex u-cap sport

Guaranteed head protection with a sporty design

Reliable protection that looks good: uvex u-cap sport is an innovative baseball bump cap in accordance with Norm EN 812. The ergonomically shaped hard shell with integrated shock-absorbing elements ensures safety and optimal comfort. To give your team a uniform appearance, this model is also available as a standard baseball cap for employees working in environments where head protection is not compulsory.



Integrated shock-absorbing elements with honeycomb structure

The specially developed honeycomb structure of the cap with integrated shock-absorbing elements ensures complete protection in accordance with EN 812.



Armadillo design gives flexibility

The armadillo design of the uvex u-cap sport provides additional flexibility and ergonomically adapts to different head shapes and sizes. The extended cut-out near the ear makes it easier to wear earmuffs.



Continuously adjustable

The uvex u-cap sport can be quickly and easily fitted to the head using the adjustable velcro fastening.



Magnetic head torch

- Simple to use: magnetic fixing enables easy attachment and removal from u-cap sport
- The beam can be directed in any position thanks to a moving joint, ensuring optimal illumination
- Switch between various beam types

Dual practice and individualisation

Thanks to the dual practice concept, all employees can be kitted out in the same design: according to requirements, the uvex u-cap sport is available with an integrated hard shell or as a plain baseball cap. To be consistent with corporate design, a design or logo can be stitched onto the uvex u-cap sport in line with your individual specifications.



uvex u-cap sport

A wide range for many applications



9794.401
9794.402



9794.403
9794.404



9794.110



9794.415



9794.420
9794.421



9794.480
9794.481



9794.490
9794.491

uvex u-cap sport

uvex u-cap sport long brim

Art. no.	9794.401	9794.402
Size	55 – 59	60 – 63
Colour	black	black

uvex u-cap sport short brim

Art. no.	9794.403	9794.404
Size	55 – 59	60 – 63
Colour	black	black

Baseball cap

Art. no.	9794.110
Version	textile cap, without hard shell element, long brim
Size	one size fits all
Colour	black

uvex u-cap sport · interior fittings

Art. no.	9794.415
Version	Mesh fabric
Size	unisex
Colour	black

uvex u-cap sport vent

uvex u-cap sport vent short brim

Art. no.	9794.420	9794.421
Size	55 – 59	60 – 63
Colour	black	black
Version	Mesh fabric section for improved ventilation	

uvex u-cap sport hi-viz

- Increased all-round visibility and security for users
- Ideal addition to high visibility safety clothing in accordance with EN 471
- The colours of the fabric components comply with the requirements in

uvex u-cap sport hi-viz short brim

Art. no.	9794.480	9794.481
Size	55 – 59	60 – 63
Colour	hi-viz yellow	hi-viz yellow

Art. no.	9794.490	9794.491
Size	55 – 59	60 – 63
Colour	hi-viz orange	hi-viz orange

uvex u-cap

uvex u-cap premium · uvex u-cap basic · uvex u-cap hi-viz



uvex u-cap premium uvex u-cap basic

uvex u-cap takes nature's innovative design and combines it with comfort for your safety. The ergonomic inner shell offers complete flexibility which can perfectly adjust to any head shape and provides extra protection for the back of the head due to the low profile. The premium version boasts a sophisticated interior design consisting of four layers of shock-absorbing foam and highly absorbent fleece which are woven into a breathable mesh. The reflective piping around the brim and two main seams offer enhanced safety due to greater visibility. The basic version of the uvex u-cap impact cap is fitted with a standard foam pad inlay.

Art. no.	9794.300
Version	premium armadillo-style
	ultra comfortable lining
Colour	anthracite
Art. no.	9794.301
Version	premium armadillo-style
	ultra comfortable lining
	short brim
Colour	anthracite
Art. no.	9794.310
Version	premium u-style
	ultra comfortable lining
Colour	anthracite
Art. no.	9794.311
Version	premium u-style
	ultra comfortable lining
	short brim
Colour	anthracite
Art. no.	9794.200
Version	basic, foam pad inlay
Colour	anthracite

uvex u-cap hi-viz

This version of the uvex u-cap, available in bright yellow or orange, is the perfect addition to existing high-visibility safety clothing and conforms to EN 471. In addition to the reflective piping, it also features an adjustment strap made from reflective material – for all-round improved wearer safety and visibility. The colours of the fabrics used conform to the requirements of EN 471.

Art. no.	9794.800
Version	premium armadillo style
	ultra comfortable lining
Colour	hi-viz yellow
Art. no.	9794.900
Version	premium armadillo style
	ultra comfortable lining
Colour	hi-viz orange

► EN 812-compliant impact caps provide protection from injuries caused by hitting fixed objects. They do not provide sufficient protection against falling objects and can only be used in situations where a safety helmet is not obligatory as per EN 397.

Safety Helmets

Overview

Art. no.	Collection	Product	Colour	Page
9060.017	uvex visors	Replacement lens, CA	clear	89
9705.014	uvex visors	Cellulose acetate protective visor	clear	89
9706.514	uvex visors	Antifog cellulose acetate protective visor	clear	89
9707.014	uvex visors	Cellulose acetate protective visor	clear	89
9708.514	uvex visors	Antifog cellulose acetate protective visor	clear	89
9723.017	uvex visors	Replacement lens, PC	clear	89
9760.000	Accessories	Suspension harness for uvex pheos		90
9760.001	Accessories	Suspension harness with rotating size adjusters for uvex pheos		90
9760.005	Accessories	Sweatband for uvex pheos, uvex pheos alpine, uvex 9780 antistatic		90
9760.007	Accessories	Sweatband for interior fitting uvex pheos IES		90
9770.020	uvex pheos E	Safety helmet	white	84
9770.030	uvex pheos E-WR	Safety helmet	white	84
9770.031	uvex pheos E-S-WR	Safety helmet	white	84
9770.120	uvex pheos E	Safety helmet	yellow	84
9770.130	uvex pheos E-WR	Safety helmet	yellow	84
9770.131	uvex pheos E-S-WR	Safety helmet	yellow	84
9770.832	uvex pheos E-S-WR	Safety helmet	dark grey	84
9772.001	Accessories	Interior fittings for uvex pheos IES with spectacle clip		90
9772.002	Accessories	IES eyewear clip with slider for uvex pheos IES		90
9772.020	uvex pheos B	Safety helmet	white	83
9772.030	uvex pheos B-WR	Safety helmet	white	83
9772.031	uvex pheos B-S-WR	Safety helmet	white	83
9772.040	uvex pheos IES	Safety helmet	white	83
9772.120	uvex pheos B	Safety helmet	yellow	83
9772.130	uvex pheos B-WR	Safety helmet	yellow	83
9772.131	uvex pheos B-S-WR	Safety helmet	yellow	84
9772.140	uvex pheos IES	Safety helmet	yellow	83
9772.220	uvex pheos B	Safety helmet	orange	83
9772.230	uvex pheos B-WR	Safety helmet	orange	83
9772.240	uvex pheos IES	Safety helmet	orange	83
9772.320	uvex pheos B	Safety helmet	red	83
9772.332	uvex pheos B-S-WR	Safety helmet	red	84
9772.430	uvex pheos B-WR	Safety helmet	green	83
9772.520	uvex pheos B	Safety helmet	blue	83
9772.530	uvex pheos B-WR	Safety helmet	blue	83
9772.531	uvex pheos B-S-WR	Safety helmet	blue	84
9772.832	uvex pheos B-S-WR	Safety helmet	dark grey	84
9772.920	uvex pheos B	Safety helmet	black	83
9772.930	uvex pheos B-WR	Safety helmet	black	83
9772.932	uvex pheos B-S-WR	Safety helmet	black	84
9773.050	uvex pheos alpine	Safety helmet	white	85
9773.150	uvex pheos alpine	Safety helmet	yellow	85
9773.250	uvex pheos alpine	Safety helmet	orange	85
9773.350	uvex pheos alpine	Safety helmet	red	85
9773.450	uvex pheos alpine	Safety helmet	green	85
9773.550	uvex pheos alpine	Safety helmet	blue	85
9773.950	uvex pheos alpine	Safety helmet	black	85
9780.001	Accessories	Suspension harness with rotating size adjuster for uvex 9780 antistatic		90
9780.020	uvex 9780 antistatic	Safety helmet	white	85
9780.030	uvex 9780 antistatic-WR	Safety helmet	white	85
9780.550	uvex 9780 antistatic-WR	Safety helmet	sky-blue	85
9790.005	Accessories	Leather chin straps		90
9790.018	uvex pheos reflex set M	Reflective set		85
9790.021	Accessories	Forked chin straps for uvex pheos		90
9790.022	Accessories	Goggle clip for uvex pheos/chin strap clip for uvex pheos alpine		90
9790.023	Accessories	Pen holder for uvex pheos		90
9790.029	Accessories	LED head torch		91
9790.047	uvex visors	Helmet bracket	black	89
9790.048	uvex visors	Visor lens, PC	clear	89
9790.058	Accessories	LED head torch		91
9790.064	Accessories	LED head torch uvex u-cap sport		91
9790.069	Accessories	uvex pheos helmet adapter		91
9794.110	uvex u-cap sport	Baseball cap, unisize	black	93
9794.200	uvex u-cap	Basic impact cap	anthracite	94
9794.300	uvex u-cap	Armadillo-style impact cap	anthracite	94
9794.301	uvex u-cap	Armadillo-style impact cap with short brim	anthracite	94
9794.310	uvex u-cap	u-style impact cap	anthracite	94
9794.311	uvex u-cap	u-style impact cap with short brim	anthracite	94
9794.401	uvex u-cap sport	Impact cap, long brim, size 55 - 59	black	93
9794.402	uvex u-cap sport	Impact cap, long brim, size 60 - 63	black	93
9794.403	uvex u-cap sport	Impact cap, short brim, size 55 - 59	black	93



Safety Helmets

Overview

Art. no.	Collection	Product	Colour	Page
9794.404	uvex u-cap sport	Impact cap, short brim, size 60 - 63	black	93
9794.415	uvex u-cap sport	Interior fittings, unisize	black	93
9794.420	uvex u-cap sport vent	Impact cap, short brim, size 55 - 59	black	93
9794.421	uvex u-cap sport vent	Impact cap, short brim, size 60 - 63	black	93
9794.480	uvex u-cap sport hi-viz	Impact cap, short brim, size 55 - 59	hi-viz yellow	93
9794.481	uvex u-cap sport hi-viz	Impact cap, short brim, size 60 - 63	hi-viz yellow	93
9794.490	uvex u-cap sport hi-viz	Impact cap, short brim, size 55 - 59	hi-viz orange	93
9794.491	uvex u-cap sport hi-viz	Impact cap, short brim, size 60 - 63	hi-viz orange	93
9794.800	uvex u-cap hi-viz	Armadillo-style impact cap	hi-viz yellow	88
9794.900	uvex u-cap hi-viz	Armadillo-style impact cap	hi-viz orange	88
9906.002	uvex pheos	Visor	clear	88
9906.003	uvex pheos	Visor	clear	88
9906.005	uvex pheos	Visor	clear	88
9906.006	uvex pheos	Visor	clear	88
9906.007	uvex pheos	Visor	blue	88
9906.008	uvex pheos	Visor	blue	88
9906.012	uvex pheos	Replacement lens for visor system	clear	88
9906.017	uvex pheos	Replacement lens for visor system	blue	88
9924.010	uvex visors	Adaptor	black	89